

SOUTHEAST CORPORATE

corpAnalytics Variance Report

Sample Credit Union

3300 East First Ave.
Denver, CO 80206

March 31, 2009 - June 30, 2009

Client: 1031 - Calculated: 09/30/2009 05:25 PM

The corpAnalytics Variance Report consists of data supplied by various third parties, and by the institutions themselves. The user of the Model acknowledges that neither Southeast Corporate FCU nor any third-party provider independently verifies information contained in these results. AS A RESULT, SOUTHEAST CORPORATE FCU MAKES NO WARRANTY, EXPRESS OR IMPLIED, INCLUDING WITHOUT LIMITATION, ANY WARRANTY OF MERCHANTABILITY OR FITNESS FOR A PARTICULAR PURPOSE WITH RESPECT TO THE SERVICE. IN NO CASE SHALL EITHER SOUTHEAST CORPORATE FCU OR ANY THIRD PARTY PROVIDERS, OR THEIR RESPECTIVE OFFICERS, DIRECTORS, AGENTS, OR EMPLOYEES BE LIABLE FOR ANY INDIRECT, INCIDENTAL, OR CONSEQUENTIAL DAMAGES (INCLUDING LOST PROFITS) INCURRED IN CONNECTION WITH THE USE OR SALE OF THE MODEL.

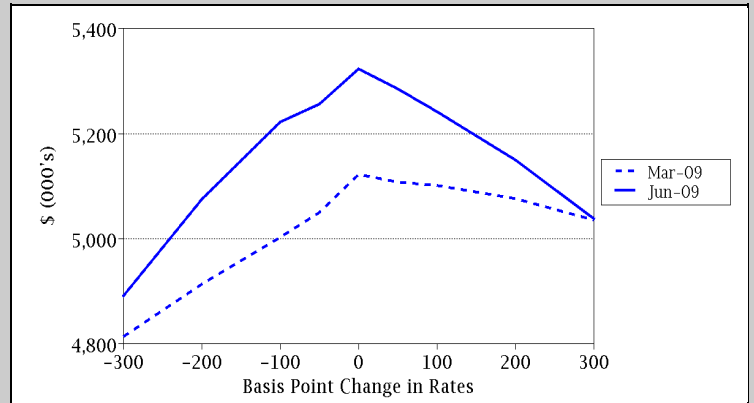
Nothing contained herein shall be deemed to be an offer to sell, or a solicitation of an offer to buy the securities mentioned. Southeast Corporate FCU, its third-party providers, their officers, directors, and employees may have an interest in one or more of the securities mentioned.

Interest Rate Risk Comparison

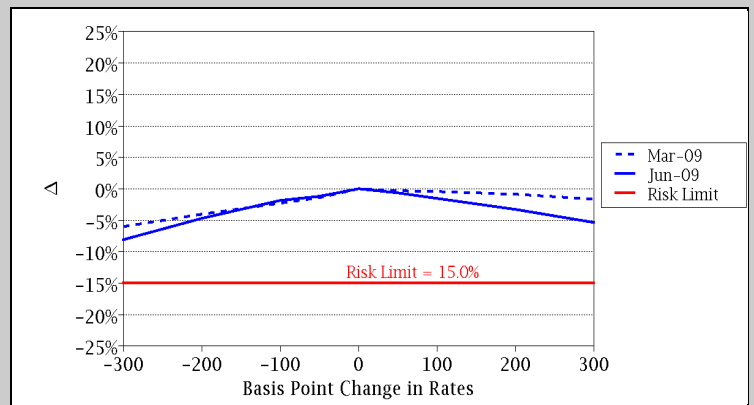
Sample Credit Union - March 31, 2009 vs. June 30, 2009

Short Term Interest Rate Risk

Change in Basis Points	Net Interest Income		
	06-30-2009	03-31-2009	Difference
-300	4,891,868	4,813,647	78,221
-200	5,075,193	4,914,096	161,097
-100	5,221,805	5,002,786	219,019
-50	5,256,247	5,050,469	205,778
0	5,322,832	5,122,150	200,682
50	5,285,679	5,107,917	177,762
100	5,241,846	5,100,973	140,873
200	5,149,971	5,076,003	73,968
300	5,037,945	5,035,912	2,033

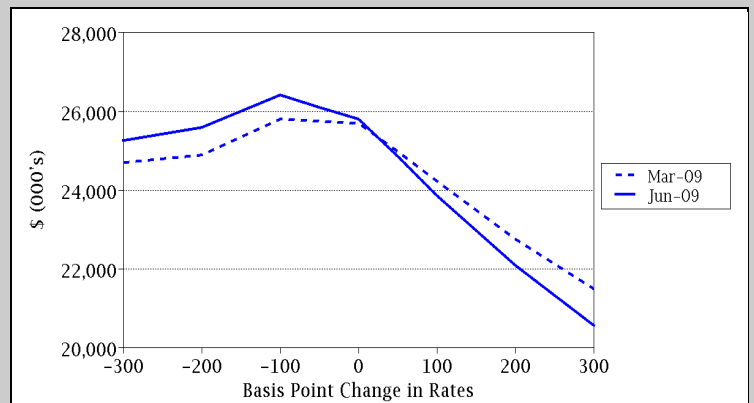


Change in Basis Points	% Change in Net Interest Income		
	06-30-2009	03-31-2009	Difference
-300	-8.10%	-6.02%	-2.08%
-200	-4.65%	-4.06%	-.59%
-100	-1.90%	-2.33%	.43%
-50	-1.25%	-1.40%	.15%
0	.00%	.00%	.00%
50	-.70%	-.28%	-.42%
100	-1.52%	-.41%	-1.11%
200	-3.25%	-.90%	-2.35%
300	-5.35%	-1.68%	-3.67%

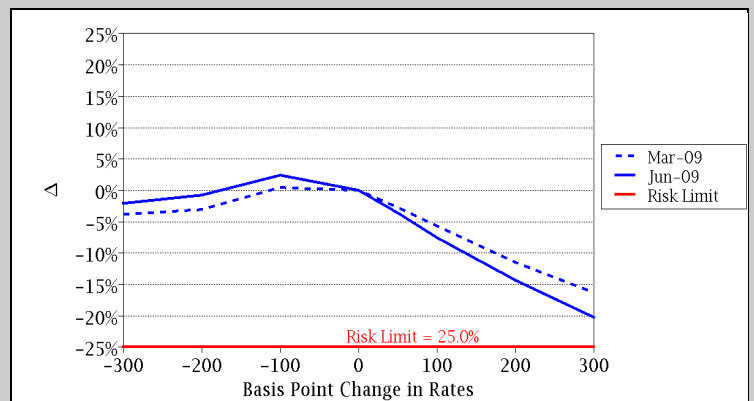


Long Term Interest Rate Risk

Change in Basis Points	Present Value Equity (000)		
	06-30-2009	03-31-2009	Difference
-300	25,259	24,705	554
-200	25,600	24,895	705
-100	26,421	25,805	616
-50	26,094	25,742	352
0	25,797	25,691	106
50	24,857	24,987	(130)
100	23,862	24,229	(367)
200	22,096	22,752	(656)
300	20,567	21,496	(929)



Change in Basis Points	% Change in Present Value Equity		
	06-30-2009	03-31-2009	Difference
-300	-2.09%	-3.84%	1.75%
-200	-.76%	-3.10%	2.34%
-100	2.42%	.44%	1.98%
-50	1.15%	.20%	.95%
0	.00%	.00%	.00%
50	-3.64%	-2.74%	-.90%
100	-7.50%	-5.69%	-1.81%
200	-14.35%	-11.44%	-2.91%
300	-20.27%	-16.33%	-3.94%



Detail of Material Differences

Sample Credit Union - March 31, 2009 vs. June 30, 2009

Balance Sheet

Summary Account	Account Name	% of Assets	\$(000) Change	Previous	Current
U.S. Agencies	U.S. Agencies	-1.2%	(1,984)	6,289,244	4,305,551
Mortgage-Backed Securities	Mortgage-Backed Securities	2.6%	4,242	40,816,520	45,058,409
Money Market Shares	Money Market Shares	1.1%	1,790	4,528,044	6,318,324

Tolerance = 1.0% of Total Assets

Source ALM Report #2.10 - 2.20

Fair Value Gains/Losses

Summary Account	Account Name	% of Assets	\$(000) Change	Previous	Current

Tolerance = 0.5% of Total Assets

Source ALM Report #2.10 - 2.20

Change in Value + 300 bp

Summary Account	Account Name	% of Assets	\$(000) Change	Previous	Current
Mortgage-Backed Securities	Mortgage-Backed Securities	-0.7%	(1,107)	(1,923,378)	(3,030,749)
Net Economic Value with Off B/S	Net Economic Value with Off B/S	-0.6%	(1,035)	(4,194,908)	(5,229,523)

Tolerance = 0.2% of Total Assets

Source ALM Report #2.60

Change in Value - 300 bp

Summary Account	Account Name	% of Assets	\$(000) Change	Previous	Current
Mortgage-Backed Securities	Mortgage-Backed Securities	0.4%	675	769,560	1,444,647
Real Estate Loans	Real Estate Loans	-0.3%	(466)	1,329,899	863,783
Net Economic Value with Off B/S	Net Economic Value with Off B/S	0.3%	448	(986,210)	(537,873)

Tolerance = 0.2% of Total Assets

Source ALM Report #2.60

Duration

Summary Account	Account Name	Change	Previous	Current
U.S. Agencies	U.S. Agencies	0.51	1.74	2.25
Mortgage-Backed Securities	Mortgage-Backed Securities	0.61	1.37	1.98
Real Estate Loans	Real Estate Loans	0.31	2.64	2.95

Tolerance = 0.25 Years

Source ALM Report #2.70

Portfolio Yields

Summary Account	Account Name	b.p. Change	Previous	Current
Money Market Shares	Money Market Shares	-92	2.540	1.622

Detail of Material Differences

Sample Credit Union - March 31, 2009 vs. June 30, 2009

Tolerance = 50.0 Basis Points

Source ALM Report #2.10 - 2.20

Next 12 Months Income Proforma

Summary Account	Account Name	% of NII	\$ Change	Previous	Current
Operating Income	Operating Income	5.7%	290,682	2,092,150	2,382,832
Net Income	Net Income	5.7%	290,682	1,312,150	1,602,832

Tolerance = 5.0 % of Net Interest Income

Source ALM Report #3.20

Change in Next 12 Months Income Proforma + 300

Summary Account	Account Name	% of NII	\$ Change	Previous	Current
Mortgage-Backed Securities	Mortgage-Backed Securities	1.2%	60,047	354,543	414,590
IRA's / KEOGH	IRA's / KEOGH	3.9%	200,145	226,227	426,372
Operating Income	Operating Income	-3.9%	(198,649)	(86,238)	(284,887)
Net Income	Net Income	-3.9%	(198,649)	(86,238)	(284,887)

Tolerance = 1.0 % of Net Interest Income

Source ALM Report #3.11

Change in Next 12 Months Income Proforma - 300

Summary Account	Account Name	% of NII	\$ Change	Previous	Current
Mortgage-Backed Securities	Mortgage-Backed Securities	-3.3%	(168,572)	(264,323)	(432,895)
Real Estate Loans	Real Estate Loans	-1.4%	(69,902)	(201,595)	(271,497)
Share Certificates	Share Certificates	-2.9%	(147,572)	(249,085)	(396,657)
Operating Income	Operating Income	-2.4%	(122,461)	(308,503)	(430,964)
Net Income	Net Income	-2.4%	(122,461)	(308,503)	(430,964)

Tolerance = 1.0 % of Net Interest Income

Source ALM Report #3.11

Reinvestment Rates

Summary Account	Account Name	b.p. Change	Previous	Current
Installment Loans	Term Loan (Single Paym	215	5.50	7.65
Installment Loans	New Car	215	5.50	7.65
Installment Loans	Used Car A	-50	6.50	6.00
Installment Loans	Used Car NA	-50	6.50	6.00
Installment Loans	New Car-Single Pay	215	5.50	7.65
Money Market Shares	Money Market	-92	2.54	1.62

Tolerance = 50.0 Basis Points

Source ALM Report #9.30

Index Rates

Index Source	Index Name	b.p. Change	Previous	Current
Global	3 Mo LIBOR	-59	1.19	0.60
Global	10 YR CMT Weekly Average	89	2.74	3.63
Global	30 YR CMT Weekly Average	72	3.66	4.38

Detail of Material Differences

Sample Credit Union - March 31, 2009 vs. June 30, 2009

Index Source	Index Name	b.p. Change	Previous	Current
Global	6 Month CD	-96	1.63	0.67
Global	2nd Mkt-6 Mo Neg CD Weekly Avg	-96	1.63	0.67
Global	2nd Mkt-6 Mo Neg CD Month Avg	-96	1.63	0.67
Global	10 Year Treasury	82	2.71	3.53
Global	30 Year Treasury	76	3.56	4.32
Global	5 YR CMT Monthly Average	89	1.81	2.70
Global	5 YR CMT Weekly Average	90	1.76	2.66
Global	7 YR CMT Weekly Average	99	2.30	3.29
Global	Commercial Paper	-100	1.48	0.48
Global	5 Year Treasury	87	1.67	2.54
Global	7 Year Treasury	91	2.28	3.19
Global	6 Mo LIBOR	-63	1.74	1.11

Tolerance = 50.0 Basis Points Source ALM Report #9.60

Next 12 Months Budget (Non-Interest)

Budget Source	% Change	Previous	Current

Tolerance = 10.0% of Previous Value Source ALM Report #3.10

Changes in Assumptions

Summary Account	Account #	Account Description	Type	New Assumption	Old Assumption
Interest Bearing Deposits	1041	Corporate Deposit	Rate Source	Corp Deposit	Corp Deposits
Interest Bearing Deposits	1042	Corporate Deposit #2	Rate Source	Corp Deposit	Corp Deposits
Other Loans	4600	Insurance Co	Down Move %	100	75
Other Loans	4600	Insurance Co	Up Move %	100	75
Other Loans	4605	Debt Management	Down Move %	100	75
Other Loans	4605	Debt Management	Up Move %	100	75
Other Loans	4610	Visa Loans	Down Move %	100	75
Other Loans	4610	Visa Loans	Up Move %	100	75
Other Loans	4611	Platinum Visa	Down Move %	100	75
Other Loans	4611	Platinum Visa	Up Move %	100	75
Share Certificates	4650	6 Month CDs	Down Move %	50	30
Share Certificates	4652	6 Month CDs-Monthly	Down Move %	50	30
Share Certificates	4655	IRA 5 Month Certificate	Down Move %	50	30
Share Certificates	4662	12 Month CDs	Down Move %	50	30
Share Certificates	4663	12 Month CDs-Monthly	Down Move %	50	30
Share Certificates	4669	18 Month CDs	Down Move %	50	30
Share Certificates	4670	18 Month CD-Monthly	Down Move %	50	30
Share Certificates	4675	24 Month CD	Down Move %	50	30
Share Certificates	4676	24 Month CD-Monthly	Down Move %	50	30
Share Certificates	4680	30 Month CDs	Down Move %	50	30
Share Certificates	4681	30 Month CD-Monthly	Down Move %	50	30
Share Certificates	4686	36 Month CD	Down Move %	50	30
Share Certificates	4687	36 Month CD-Monthly	Down Move %	50	30

Detail of Material Differences

Sample Credit Union - March 31, 2009 vs. June 30, 2009

Summary Account	Account #	Account Description	Type	New Assumption	Old Assumption
Share Certificates	4688	48 Month CDs	Down Move %	50	30
Share Certificates	4690	60 Month CDs	Down Move %	50	30
Share Certificates	4691	60 Monthly Pay CDs	Down Move %	50	30
IRAs / KEOGH	4750	IRAs	Floor Rate	2.00%	0.00%
IRAs / KEOGH	4750	IRAs	Up Move %	50	15
IRAs / KEOGH	4751	IRA Rollover	Floor Rate	2.00%	0.00%
IRAs / KEOGH	4751	IRA Rollover	Up Move %	50	15
IRAs / KEOGH	4752	Roth IRA	Floor Rate	2.00%	0.00%
IRAs / KEOGH	4752	Roth IRA	Up Move %	50	15
IRAs / KEOGH	4753	Roth Conv IRA	Floor Rate	2.00%	0.00%
IRAs / KEOGH	4753	Roth Conv IRA	Up Move %	50	15
IRAs / KEOGH	4754	Education IRA	Floor Rate	2.00%	0.00%
IRAs / KEOGH	4754	Education IRA	Up Move %	50	15

Source ALM Report #9.30

New Accounts

Summary Account	Account #	Account Description	Balance	Rate

Source ALM Report #9.30